



***Build Smart!***

**MATEK**

# TABLE OF CONTENTS

1

MISSION

3

REACH

5

RATES

2

EDITORIAL

4

PLATFORMS

6

CONTACT





# OUR MISSION

*Real-time News, Everywhere*

**MATEK** is the only online magazine, with real-time news, which offers a new perspective in the field of construction: **everything under one roof**. Behind **MATEK**, a digital magazine dedicated to the construction industry lies our desire to **connect each business with its audience**, to **inform in real-time** and correctly the public & the entrepreneurs. At the same time, we **tell the story of the businesses and the people who created them**, taking care to **include an educational component** for young entrepreneurs.

**Jackie James, Vice President - World of Concrete**

Many thanks for the continued support!! Hope you will join us again.

**Justin A. Metzger, M.A.**, Association of Equipment Manufacturers (AEM)

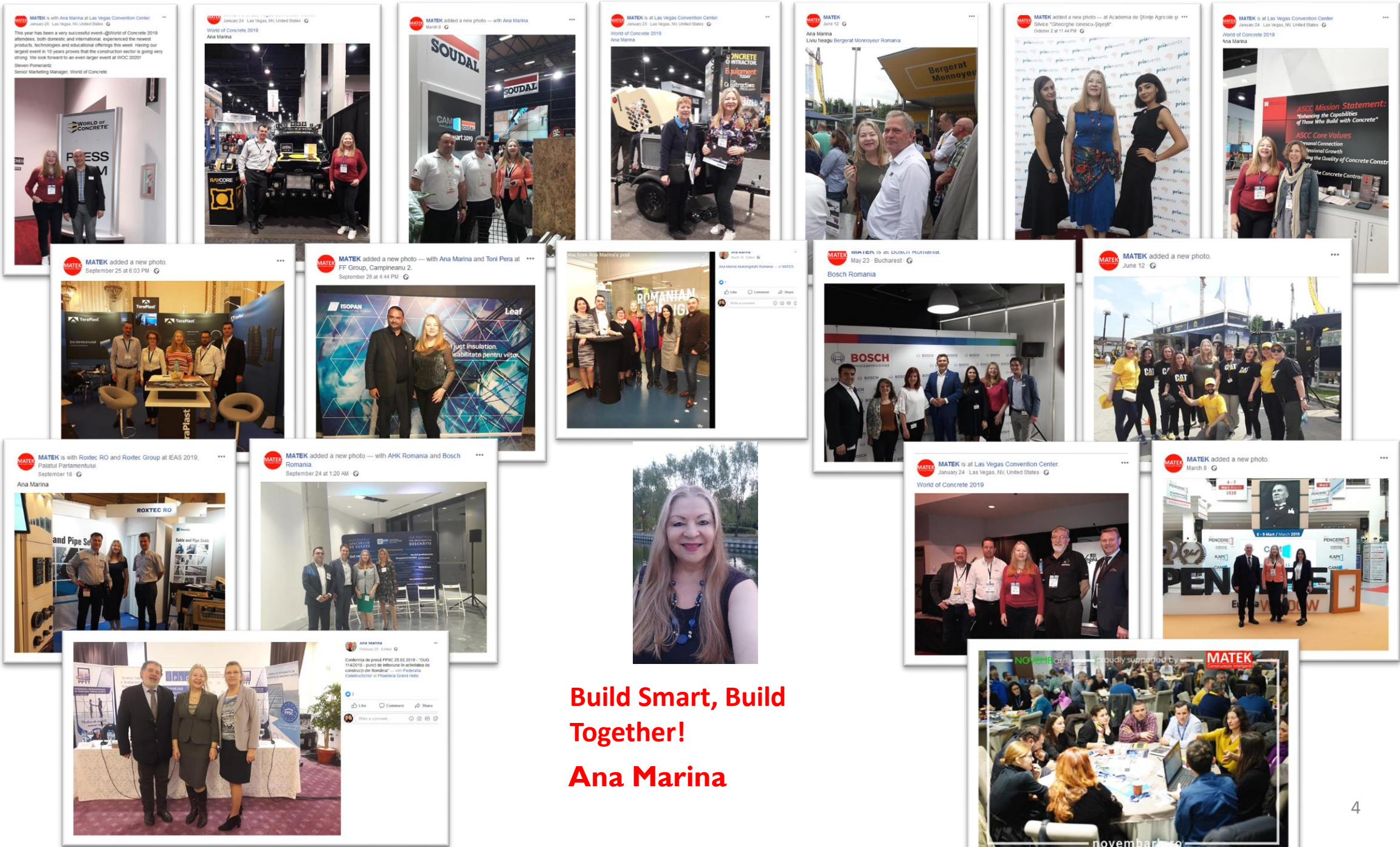
Thanks again for covering the asphalt paving and construction industries, and I look forward to seeing you.

**Steven Pomerantz**, Senior Marketing Manager - **World Of Concrete**

Thank you, looks great!

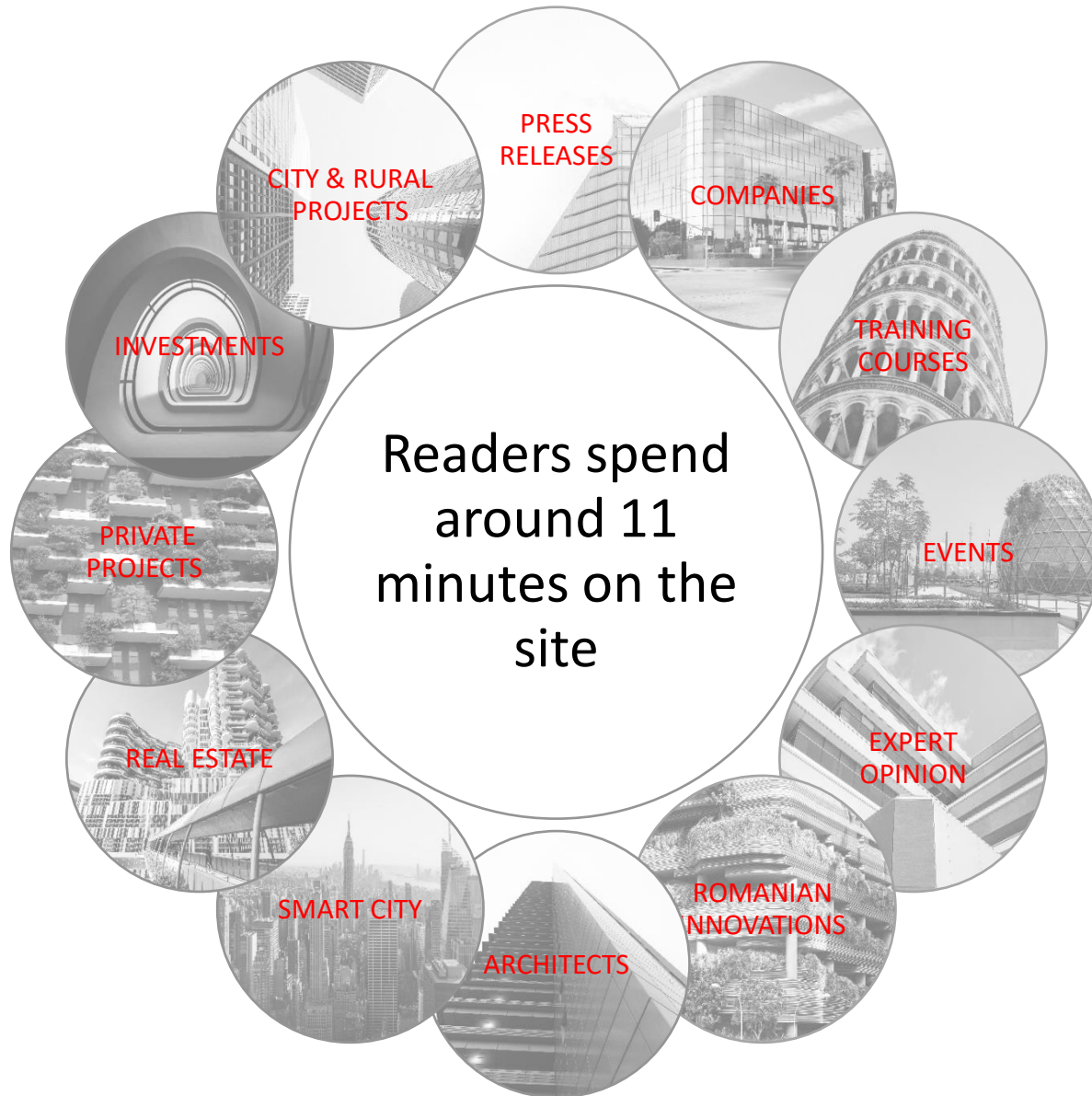
Thanks for the continued coverage of the show and will see you soon!





**Build Smart, Build Together!**  
**Ana Marina**

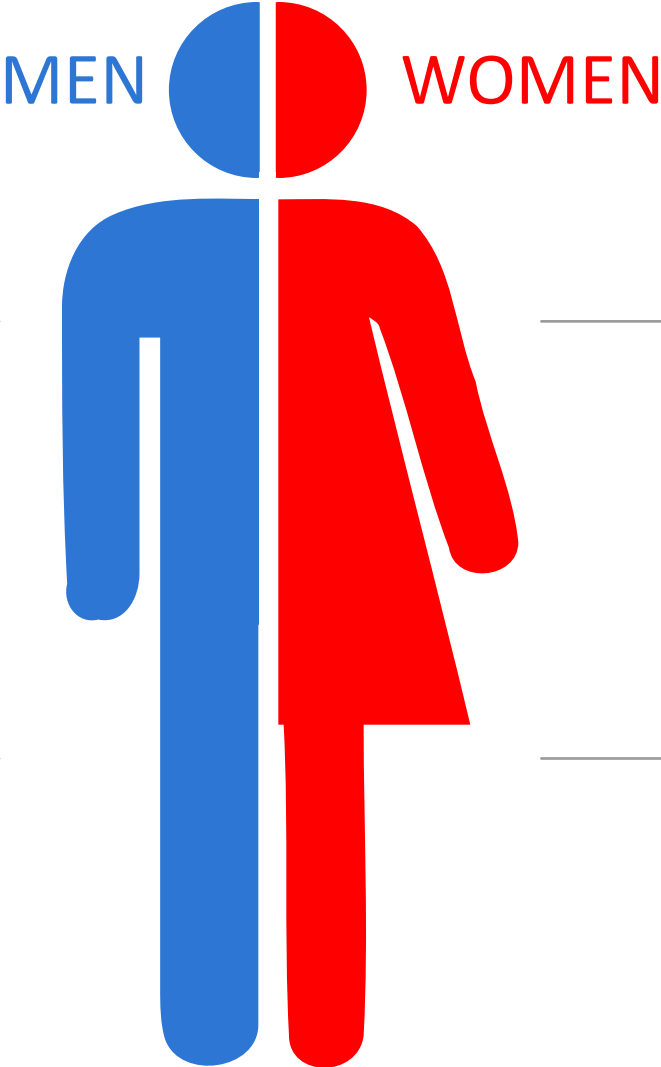
# MATEK EDITORIAL PILLARS



- SITE
- MASONRY MORTARS, CONCRETES
- PREFABRICATED CONCRETE
- SYSTEMS AND AUTOMATION
- JOINERY AND FACADES
- DESIGN, FINISHING
- AIR CONDITIONING SYSTEMS
- ROOFING SYSTEMS
- INSULATION AND WATERPROOFING
- SOUND INSULATION AND ACOUSTIC SYSTEMS
- FACILITY MANAGEMENT
- SAFETY AND PROTECTION
- NEW TECHNOLOGIES, INTELLIGENT BUILDINGS
- SUCCESSFUL ENTREPRENEURS

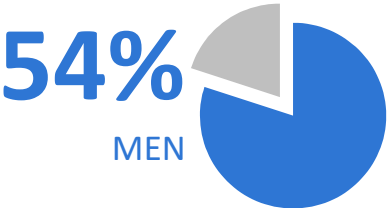
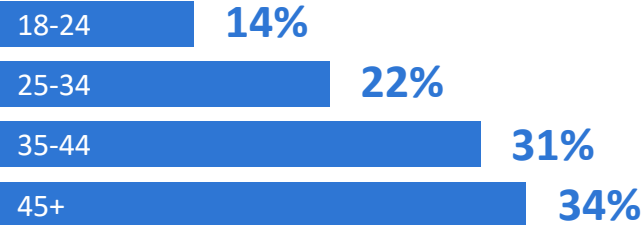


# REACH | WHO ARE YOU TALKING TO



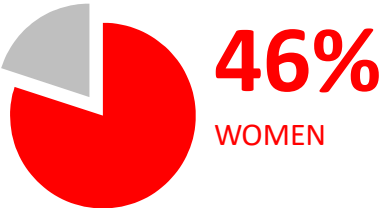
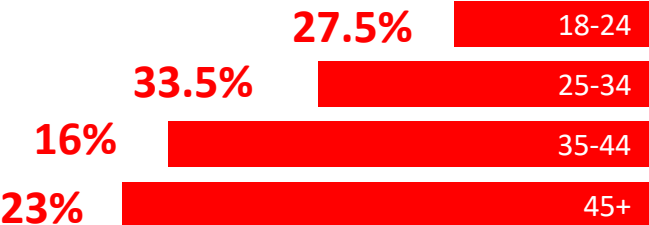
## 54% MEN

55% go directly to the site, 21% through Google, 18% from social networks, 6% referral.



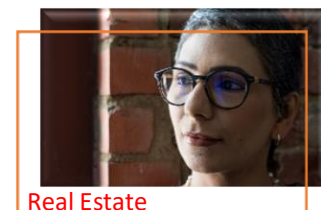
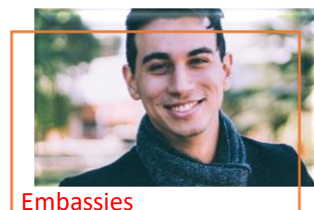
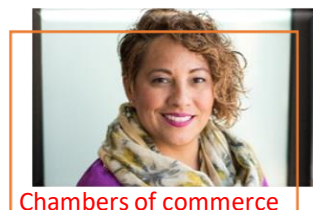
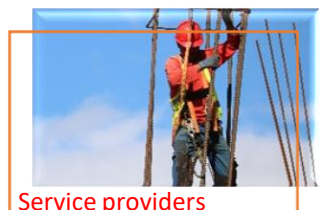
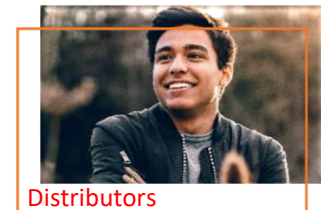
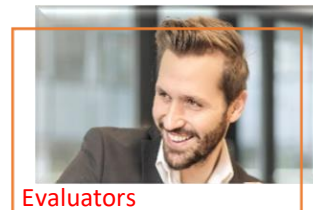
## 46% WOMEN

55% go directly to the site, 21% through Google, 18% from social networks, 6% referral.



# REACH | WHO ARE YOU TALKING TO

The **monthly** NEWSLETTER includes the best selection of articles sent to an exclusive community of more than 10,000 members from the country and abroad.



# MATEK ACROSS PLATFORMS



**+20.000**  
monthly  
visitors on  
website

**+10.000**  
architects,  
constructors,  
entrepreneurs etc  
read the monthly  
newsletter



# ADVERTISING RATES

€ 150 / Monthly PACKAGE

€ 350 / Monthly PACKAGE

€ 550 / Monthly PACKAGE

€ 600 / One Time, SUCCEFUL ENTREPRENEURS

€ 250 / Monthly BANNER

Publish 1 customer-submitted article  
Share on Facebook & LinkedIn  
Insert links, keywords, tags  
Post to the appropriate categories  
1 Opening picture

Publish 1 customer-submitted article  
Share on Facebook & LinkedIn  
Insert links, keywords, tags  
Post to the appropriate categories  
1 Opening photo  
Insert 1-2 pictures in the body of the article or in the gallery  
Appearance in the **Hot News** section  
Send in **Newsletter**

Publish 1 article, on **MATEK**  
Share on Facebook & LinkedIn  
Insert links, keywords, tags  
Publish to the appropriate categories  
1 Opening photo, insert photos / videos in the body of the article or Gallery of images works / products  
Appearance in the **Hot News** section  
Submission in **Newsletter**  
**Boost on Facebook** (Facebook Campaign)

Publish 1 article-interview, created by **MATEK** , under the heading "**Successful Entrepreneurs**"  
Share on Facebook & LinkedIn  
Insert links, keywords, tags  
Post to the appropriate categories  
1 Opening picture  
Insert photos / videos in the body of your article  
Gallery of works / products images  
Appearance in the **Hot News** section  
Submission to **Newsletter**  
**Boost on Facebook** (Facebook Campaign)

BANNER size 300 x 150 pixels, jpg



# PRODUCTION REQUIREMENTS

	Size
<b>BANNER</b>	300 x 150 pixels
<b>HEADER ARTICLES</b>	1200 pixels x 800 pixels
<b>MATEK LOGO PARTNERS</b>	300 pixels x 220 pixels

## Production contact

Managing Director/Owner

**Ana Marina**

**M:** +40742495802

**E:** [ana@matek.ro](mailto:ana@matek.ro)

<https://matek.ro/>





# SALES CONTACT

**Managing Director/Owner**

**Ana Marina**

**M:** +40742495802

**E:** [ana@matek.ro](mailto:ana@matek.ro)  
<https://matek.ro/>

